



HOUSING



FRENCH COURSES



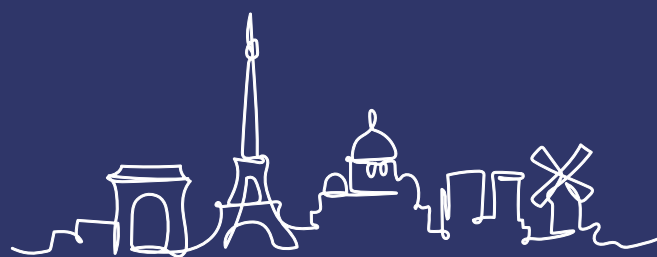
FRENCH LIFE

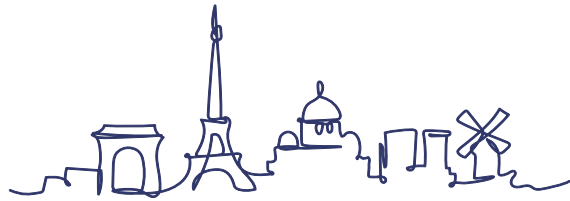


CERTIFICATION



PROFESSIONAL TRAINING





*Live & Learn France*



# *A school that values your studies*

**Founded in 1971**, Etoile Institut de Langue has acquired over the decades a solid experience in the **teaching of French as a foreign language**.

**Since 2000**, our courses in French as a Foreign Language (French Language and Civilization) have been recognized as higher education.

**Since 2010**, our courses in French as a Foreign Language have been awarded the Français Langue Etrangère Quality Label. This label is a quality assurance process initiated by three French ministries: the Ministry of Higher Education, Research and Innovation, the Ministry of Culture and the Ministry of Europe and Foreign Affairs.

**Since 2020**, our French as a Foreign Language courses are also certified by Qualiopi, a certification in the field of professional training issued by France Compétences.

**In 2023**, Etoile went on one step further by allowing university students to obtain ECTS (European Credits Transfer System). ECTS credits allow students to officially recognize their academic studies while facilitating international mobility. The possibility of obtaining ECTS and earning a diploma such as the DELF (Diplôme d'études en langue française) or the DALF (Diplôme approfondi de langue française) enhances the course followed at Etoile. It is in this spirit that we welcome you to achieve your goals.

*Joël Nangis*

**Director of Etoile Institut de Langue**



# Why choose Etoile Institut?

French language school with university credits

EUROPEAN CREDITS GRANTED PROGRAM



**EABHES**  
-  
Accredited program

**FRANCE**  
**EDUCATION**  
INTERNATIONAL

Preparatory programs for French certificates and diplomas recognized by the State



A school with the French Foreign Language Quality Label since 2010



An internationally recognized school



A school that welcomes students from American universities as part of their course

# Services & Practical information



## From / To the airports Orly & Roissy-Charles de Gaulle

### Price per transfer

ONE WAY	ROUND TRIP
120 €	210 €



## From / To all stations Paris intra-muros - Private shuttle

### Price per transfer

ONE WAY	ROUND TRIP
100 €	180 €

## Practical information

### Practical Information

- Minimum age required = 16 years old
- Teaching material included
- 1 lesson = 45 minutes
- 20 lessons = 15 hours
- 26 lessons = 20 hours

### Official document

Sending of an official document by a carrier: 80 €

### Holiday Closures

**2024 holidays:**  
01/04 - 01/05 - 08/05 - 09/05 -  
20/05 - 15/08 - 01/11 - 11/11

**End-of-year holiday:**  
from Saturday 21/12/24  
to Sunday 05/01/25



## TEF & TCF Exam All students

Price for core sections only	Price for the optional sections	
3 SECTIONS	ORAL EXPRESSION	WRITTEN EXPRESSION
120 €	65 €	55 €

Offer: -10% for Etoile students



# The School

Our invitation to live and study French in Paris...

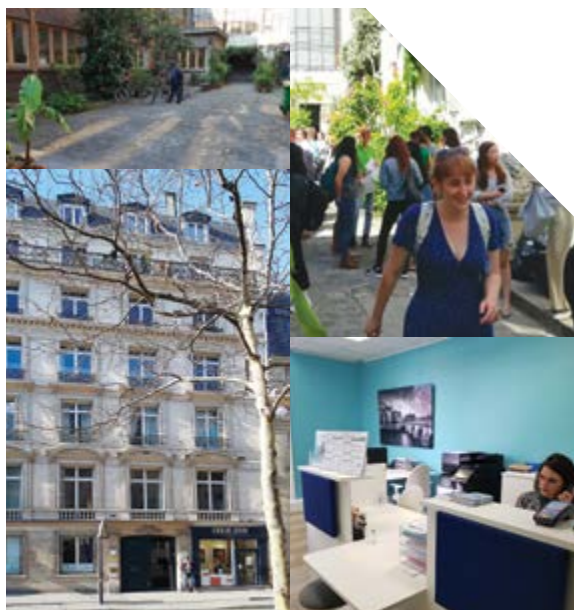
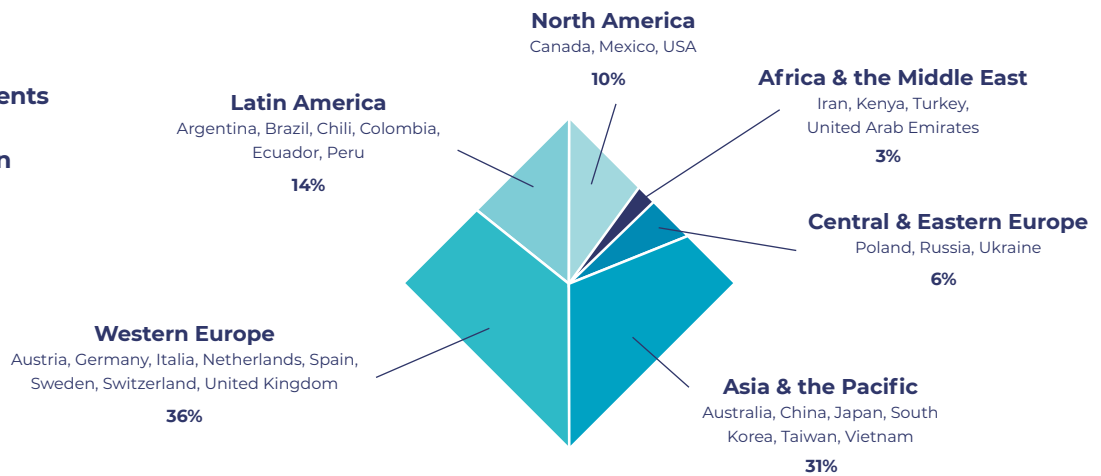
With **nearly 50 years' experience** in teaching French as a foreign language, Etoile Institut offers classes adapted to **the specific needs** of individuals and groups, for students of all levels

Today, Etoile is renowned as a private higher-education institution.

Every year since 1971, we welcome nearly **1,000 students coming from more than 60 different countries.**

Whether for personal enrichment, higher-education preparation or integrating a professional field, **our entire team accompanies you in the success of your project.**

## Nationalities of students at Etoile in 2022 by geographic region



## Etoile Institut

In a beautiful flowering courtyard, **the Institut's historic site** is an oasis of calm in **the artistic neighborhood of Saint-Germain-des-Prés.**

Classes take place in a lovely building that was once **the Théâtre de Babylone.** Students are a few meters away from the famous **Bon Marché department store**, built in 1869, the luxurious **Hôtel Lutétia**, an Art Nouveau jewel, **the Maillol Museum** and **Boucicaut Square.**

After classes, students can enjoy the local ambiance **in chic cafés**, bakeries and restaurants where the Parisian Literati meet.



**lines 10 & 12, Sèvres-Babylone station**  
**line 4, Saint-Sulpice station**

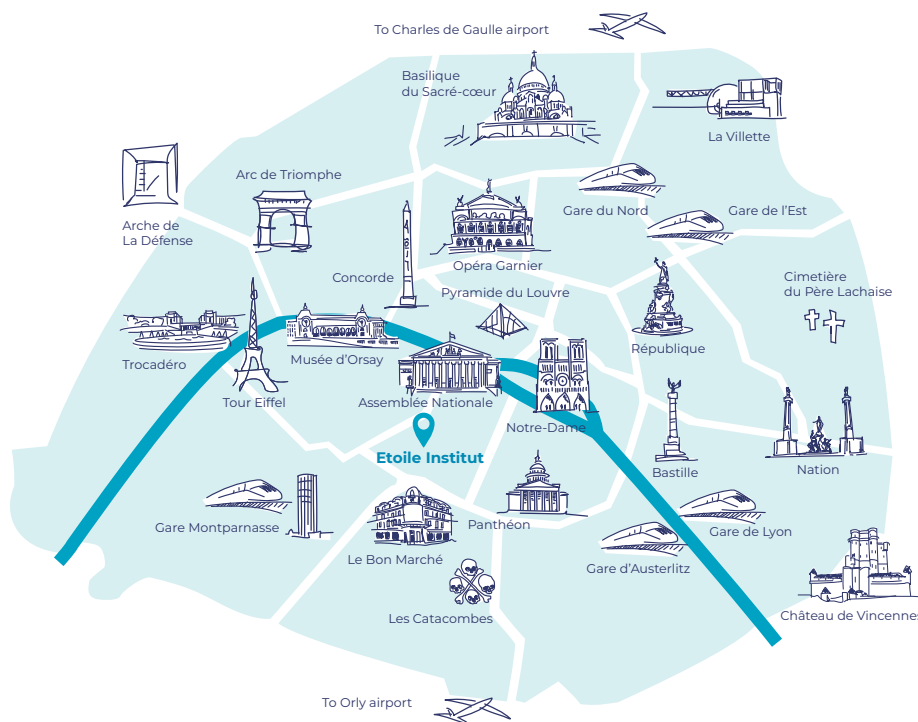


**A site in the heart of Paris and close to tourist spots...**

Located **5 minutes** from Montparnasse train station, **20 minutes** from the Gare de Lyon and Austerlitz train stations and **35 minutes** from the Gare du Nord and Gare de l'Est train stations.

**Close to** the Grande Épicerie du Bon Marché, the Hotel Lutetia and Square Boucicaut.

**A few minutes walk** from the Maillol, Rodin and Orsay museums and of the churches of Saint-Sulpice and Saint-Germain-des-Près



# Our Pedagogy and Curricula

**Quality classes**, recognized teaching methods; Etoile Institut de Langue is a private higher-education institution, registered with the Rectorat de Paris (National Education Ministry) under number 384/07-16. Etoile's French Language for Foreigners (French Language and Culture) program is **recognized to be taught at the higher-education level since 2000**.

## Our Methodology

Our teaching **method is communicative** and based on students' active participation. Our teachers **custom-create** their classes and use **a large range of authentic documents**.

After each class, students have **homework to do** which is turned in the next day and corrected by the teacher. Students therefore **develop both oral and written competencies**, which allows them to take official exams (TEF, TCF, DELF, DALF).



## Our Pedagogical Engagement

**Native French professors** holding specialized higher-education diplomas specifically oriented to **the didactics of teaching** French as a foreign language (FLE).

**Classes aligned** with the Common European Framework of Reference for Languages (CEFR) that reflect French and France as they are today.



A strong commitment to quality: Etoile Institut **has earned the Qualité FLE Label** with 3 stars (the maximum) for all audited areas: classes, programs, teaching staff, administration, facilities, management. The label is given by the French government (Ministries of Culture, Higher Education and Foreign Affairs).

## #FrenchLife

**French culture and civilization** have a central role in our classes: trips to museums, neighborhoods, parks and gardens; tastings of regional specialties; thematic visits, etc. are regularly integrated into our classes and **included** in tuition costs.

Thanks to our partners, students can **participate** in **cultural activities** that encourage friendship with foreign and local students.







## Our Programs

### General French Curriculum

#### L'Initial

A short-term program of 15 or 20 hours per week for rapid acquisition of the 4 language skills: listening, reading, speaking and writing

#### Le Certifiant

A general French course in Standard or Intensive formula for a medium or a long-term study completed with the award of an official exam the TCF (Test de connaissance du français)

#### Le Diplômant, French Language and Culture Short Program

A long-term program to prepare the DELF (Diplôme d'Etudes en Langue Française) or the DALF (Diplôme Approfondi en Langue Française)

#### La Prépa

A program built to help students enter a university or Grande École with our partner Quantum Pathway Academy

### Private Classes

For a personalized and exclusive learning experience

### Combined Classes

The dynamic of a group class and the flexibility of a private class

### Classes for Groups

In international classes or in closed groups for a tailor-made program

### Français +

A special summer program in partnership with Spéos in which students study French and photography

### Exam Preparation

A rigorous and targeted program for students taking DELF/DALF exams

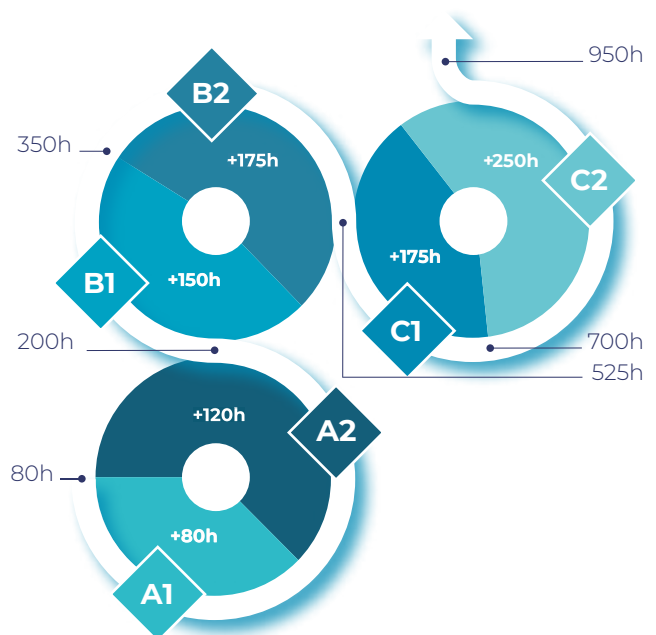
## Our Official Certifications

As a registered **TCF, TEF, DFP and Ev@lang** center, our students can receive a certification that **officially recognizes** their level in French (required for example to enter the French university system or finalize professional training).

TCF (Test de connaissance du français), TEF (Test d'évaluation du français), DFP (Diplômes de français professionnel) and Ev@lang center.



### Academic Progression\*



\* Based on the Common European Framework of Reference for Languages



*Enjoy the Etoile Experience*

*Stay in touch and up to date...*

Follow us for more **#Frenchlife**



**Facebook**

[facebook.com/EtoileGroupe](https://facebook.com/EtoileGroupe)



**Instagram**

[instagram.com/etoilegroupe](https://instagram.com/etoilegroupe)



**Blog**

[etoilegroupe.com](https://etoilegroupe.com)

## *Information & Registration*



**Phone number**

+33 1 45 48 00 05



**Email**

[contact@etoileinstitut.com](mailto:contact@etoileinstitut.com)



**Address**

38, boulevard Raspail - 75007 Paris

**ETOILEGROUPE**

**ETOILE Institut**

ETOILE Certifications

ETOILE Housing

ETOILE Formation Pro

**Etoile Institut de Langue** - Private institution of higher education

Registration number at the Rectorat de Paris: 384/07-16

Professional training number: 11 75 52880 75

38, boulevard Raspail - 75007 Paris - Tél: +33 1 45 48 00 05 - [contact@etoileinstitut.com](mailto:contact@etoileinstitut.com)

[www.etoileinstitut.com](https://www.etoileinstitut.com)

**[flə]**

**QUALITÉ**

FRANÇAIS LANGUE ÉTRANGÈRE

Label officiel délivré par l'État

■ RÉPUBLIQUE FRANÇAISE